



GALVESTON WHARVES

THE PORT OF EVERYTHING

Located at the entrance to Galveston Bay and the Houston Ship Channel, GALVESTON WHARVES has been a thriving maritime commercial center since 1825. Just 45 minutes from open seas, our 840-acre port has infrastructure and assets to support a range of cruise, cargo and commercial activities.

OUR COMPETITIVE ADVANTAGES

- 45 minutes from open seas
- 10 minutes from Interstate 45
- 2 Class 1 rails and 1 short line
- Strong Texas economy and large, diverse workforce
- Customer-focused port staff and skilled labor
- Foreign Trade Zone #36, Galveston and Galveston County



46'
AUTHORIZED CHANNEL DEPTH

CRUISE

We have bragging rights as the only cruise home port in Texas and the fourth most popular in North America, with almost 4 million passenger movements a year. Carnival, Disney, MSC, Norwegian, Princess and Royal Caribbean International are the major cruise lines that call the Port of Galveston home.

We opened our fourth cruise terminal in 2025, demonstrating our port's growing prominence as a major U.S. home port.

CARGO

We lease and maintain a wide range of facilities on the authorized 46-foot-deep Galveston Harbor. Our Galveston Island cargo operations, served by rail and truck, are a diversified mix that includes roll-on/roll-off, wind turbine, dry bulk, livestock, general and project cargos.

Pelican Island facilities are hubs for ship and rig repair, liquid bulk, and offshore exploration and production. We also have 307 acres of waterfront land for development on Pelican Island.

COMMERCIAL

Our commercial area, with its restaurants, hotel and other attractions, offers visitors a front-row seat to our working port. It's adjacent to Galveston's historic downtown with blocks of fine and casual restaurants, shops, historical architecture and museums.

ENVIRONMENTAL

From improving air quality to reducing waste, we are identifying impactful ways to make long-term changes to improve the environment. Guided by Green Marine, a voluntary environmental program for North America's maritime industry, the port is researching, planning and implementing a number of environmental programs.



CRUISE

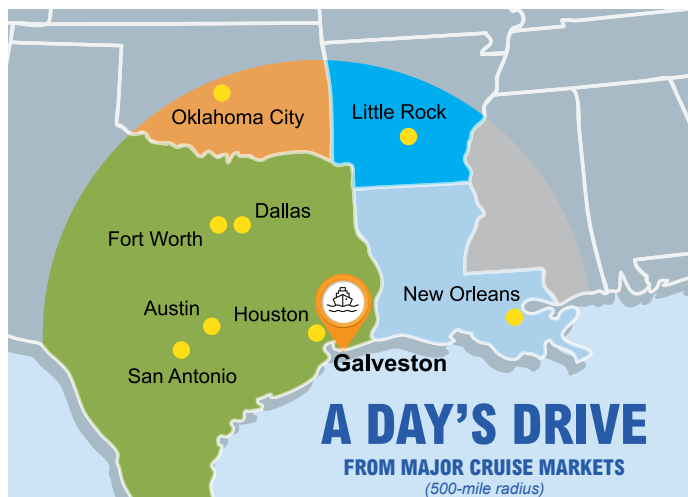
Cruising from Galveston Island has never been better! Cruise passengers choose Galveston for its convenience and a great sailing experience to Caribbean destinations on beautiful Carnival, Disney, MSC, Norwegian, Princess and Royal Caribbean International ships.

IT'S FAST AND EASY

- A drive-to destination
- 2 major international airports within 1.5 hours
- Ample port cruise parking a short walk or shuttle ride to cruise terminals
- Online cruise parking reservations with customer loyalty discounts
- Lyft and Uber curbside drop-off and pickup
- More than 400 cruise sailings a year
- 45-minute sailing time to open water
- Expedited debarking with state-of-the-art technology

PORT CRUISE INFRASTRUCTURE

- Authorized 46-foot channel depth
- 1,000-plus linear feet of berth space per terminal
- 4 cruise terminals totaling 715,000 square feet
- 8,800-plus port-operated parking spaces



AND IT GETS BETTER!

Galveston opened its fourth cruise terminal in 2025 to homeport MSC and Norwegian cruise ships.



COME FOR A CRUISE, STAY FOR SOME FUN

Galveston Island is a major tourism destination for good reason. Visitors can fill their days enjoying miles of beaches, quality hotels, historic museums and architecture, fabulous restaurants and much more.

GALVESTON CRUISE STATS

2025

- 3.6 million passenger movements
- 416 sailings
- Ranked 8th globally
- Ranked 4th in the U.S.

LOCAL ECONOMIC IMPACT

- \$880 million economic value
- 4,547 jobs
- \$291 million personal income
- \$733 million business revenue

Sources: Galveston Wharves, Martin Associates, December 2024



CARGO

Located on Galveston Harbor, one of the nation’s busiest cargo waterways, the port moved almost 3 million tons in 2025. The port’s diversified range of cargos includes bulk liquid, bulk fertilizer, roll-on/roll-off cargos, new cars, and wind turbine components. We have big plans to grow our cargo business with expansion, renovation and other improvements at our West Port Cargo Complex.

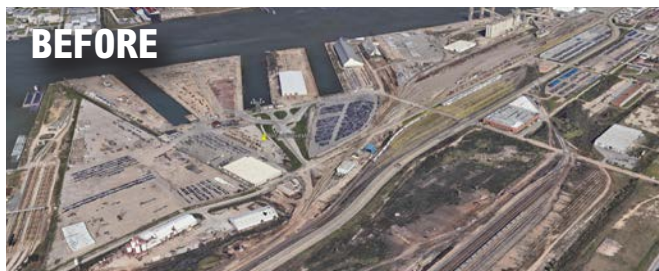
WEST PORT CARGO COMPLEX ESSENTIAL FOR GROWTH

The port is investing more than \$106 million in state grants and port operating revenues to improve and expand its West Port Cargo Complex. We’re making major progress to increase our cargo area, improve infrastructure, and position the port and the Texas economy for growth.

Since 2024, we’ve enclosed two outdated slips, begun filling one slip to add cargo acreage, built a new berth and repaved cargo handling areas. The port also demolished a decommissioned grain export facility to add 20 acres for cargo handling. Identified as an essential project in the Galveston Wharves 20-Year Strategic Master Plan, these improvements are vital for our port and the state.

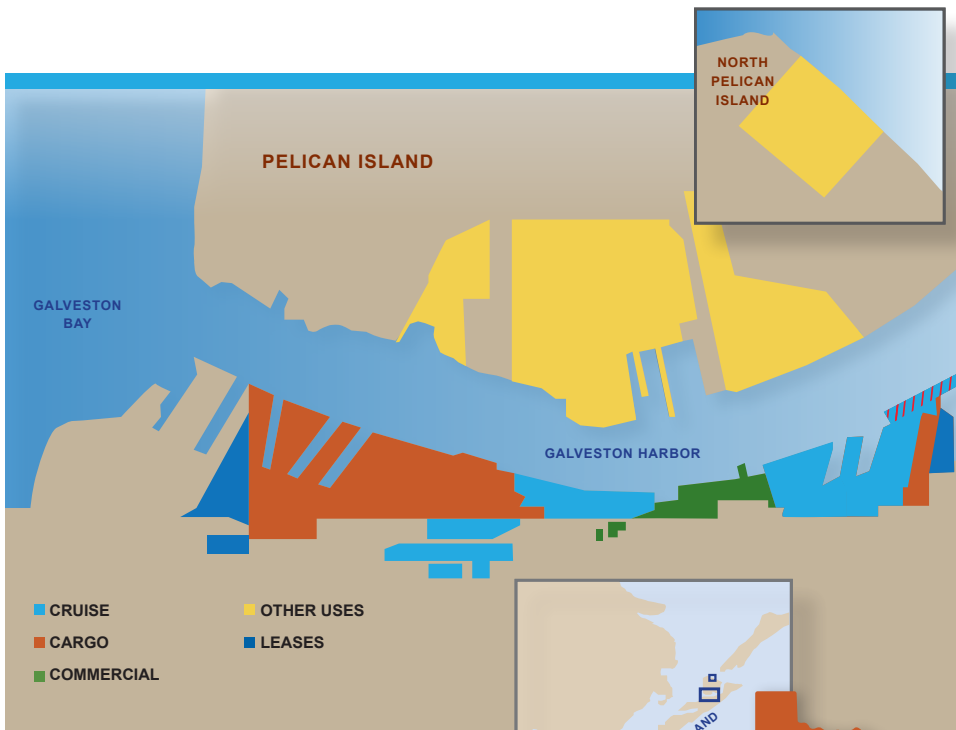
PLANNED IMPROVEMENTS

- Expand complex to 90 acres by filling outdated slips
- Open new 1,424-foot-long berth in 2026
- Improve and expand port ground and rail transportation infrastructure, including a rail spur to the waterfront



2025 CARGO STATISTICS

Dry Bulk	151,341 tons
Liquid Bulk	2,132,028 tons
General Cargo	57,279 tons
Wind	32,034 tons
RoRo	443,716 tons
New Cars	39,941 tons
TOTAL	2,856,340 tons (unaudited)



The Galveston Wharves

- 483 ACRES ON GALVESTON ISLAND
- 357 ACRES ON PELICAN ISLAND

WATCH US GROW

A self-sustaining city entity, the port generates and reinvests revenue from operations and seeks grants to create economic growth, jobs and other benefits for the Galveston region.

We're investing millions of dollars in capital improvement projects to pave the way for major growth, guided by our 20-Year Strategic Master Plan. Phased projects include the following:

- West Port Cargo Complex served by rail and truck
- Mid Port cruise facility improvements, including 4th terminal
- An interior roadway to improve traffic flow for cruise and cargo
- Economic development opportunities on Pelican Island

Strategic Master Plan details at www.PortofGalveston.com/Strategic-Master-Plan

MARITIME COMMERCE SINCE 1825

- 1825** • Mexico designates provisional port and custom entry point
- 1835** • Texas Navy homeport
- 1860** • Railroad bridge completed
- 1889** • U.S. Congress funds channel deepening, protective jetty
- 1890's** • First grain elevator built
- 1940** • City buys private port; to be known as Galveston Wharves
- 1974** • Port buys 100 acres on Pelican Island
- 1976** • Channel deepened to 40 feet
- 2000** • Carnival first cruise line to homeport in Galveston
- 2011** • Galveston Ship Channel deepened to 46 feet
- 2019** • Reaches a record 2 million passenger movements
- 2022** • New, \$125 million Royal Caribbean cruise terminal opens
- 2023** • \$53 million Cruise Terminal 25 renovation
• Arrival of newly built *Carnival Jubilee*
• Record 3 million passenger movements
- 2024** • West Port Cargo Complex expansion and improvement project begins
- 2025** • Port celebrates 200 years!
• \$156 million Cruise Terminal 16 opens

ECONOMIC IMPACT

CARGO

19,136 jobs

\$1.6 billion personal income

\$6.5 billion total economic value

Source: Martin Associates / Port & Private Terminals, 2023

CRUISE

4,547 jobs

\$291 million personal income

\$880 million economic value

Source: Martin Associates / Local Cruise Impact, 2023